

# PowerPort

## Pop-Up-Socket –Installation & Operating Instructions

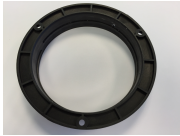
3 x UK Plug Sockets –MAX : 3250W

2 x USB power supply 2 x 500ma

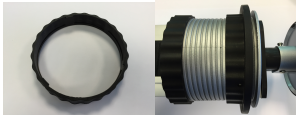
Product code: POW-2S

### Installation

1. Cut out a 102-105 mm diameter hole in work surface.
2. Ensure there is sufficient space under the surface for the unit when it is in the closed position.
3. Remove the two black rings from the collar by rotating it in an anti-clockwise direction.
4. Insert the locking ring into the hole. This can be fixed with 3 screws.



5. Place the PowerPort onto the locking ring and rotate clockwise to tighten against the underside of the work surface.
6. Replace the 2<sup>nd</sup> black ring to the bottom of the PowerPort as per the image. This is needed to ensure the PowerPort stays upright when extended.



7. Connect the socket to power supply using the pre-wired UK plug.

### Operation

1. To use the PowerPort socket press the lid and it will pop up allowing you to gently pull up the unit until it engages into position.
2. The Powerport socket is now ready for use.
3. Close the unit by gently pushing on lid to disengage the locking mechanism.

### Maintenance & Care

1. Always disconnect the power prior to cleaning.
2. Periodically wipe over with soft cloth.
3. Do not use harsh chemical cleaning products as it may damage the finish.

ATTENTION : Please ensure when using the USB power supply do not use devices that exceed the stated amperage.

